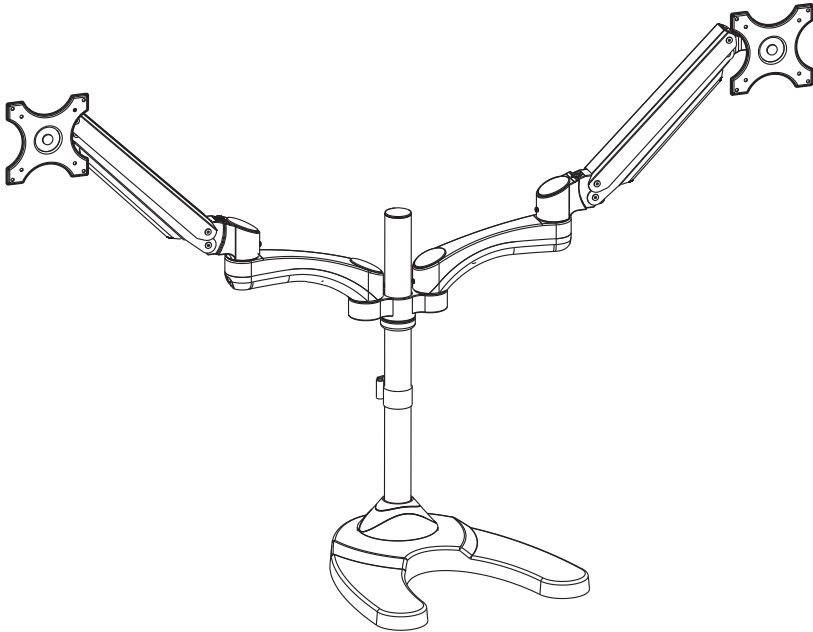


Installation Instruction



UNPACKING INSTRUCTIONS

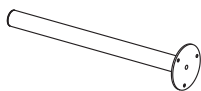
- Carefully open the carton, remove contents and lay out on cardboard or other protective surface to avoid damage.
- Check package contents against the Supplied Parts List in the next page to assure that all components were received undamaged. Do not use damaged or defective parts.
- Carefully read all instructions before attempting installation.

IMPORTANT SAFETY INFORMATION

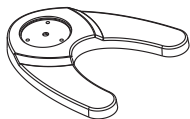
- Install and operate this device with care. Please read this instruction before installation, and carefully follow all instructions contained herein. Use proper safety equipment during installation.
- Please call a qualified installation contractor for help if you don't understand these directions or have any doubts about the safety of the installation.

Do not use this product for any purpose or in any configuration not explicitly specified in this instruction. We hereby disclaims any and all liability for injury or damage arising from incorrect assembly, incorrect mounting, or incorrect use of this product.

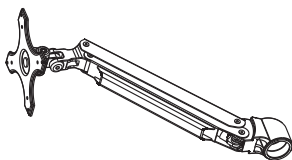
Supplied Parts List



(1) 35mm Tube Support-a



(1) Weighted Base-b



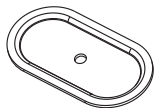
(2) VESA Plate with Gas Spring Arm-c



(1) Plastic Cover-d



(1) M10 Bolt-e



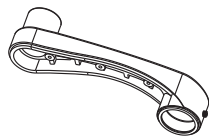
(1) Support Plate-f



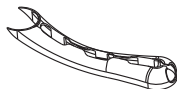
(1) M10 Washer-g



(1) Spring Washer-h



(2) Add-on Arm-i



(2) Wire Cover-j



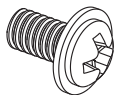
(4) Axis Cover-k



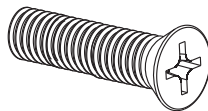
(1) Stopper Ring-l



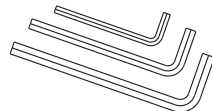
(6) M4x6 Bolt-m



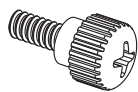
(4) M6x12 Bolt-n



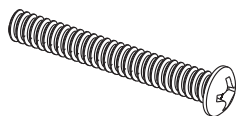
(3) M6x29 Bolt-o



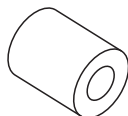
(1) Allen Key-p



(8) M4x12 Thumb Bolt-q



(8) M4x30 Bolt-r



(8) M4 Space-s



(1) Arm Connector-t



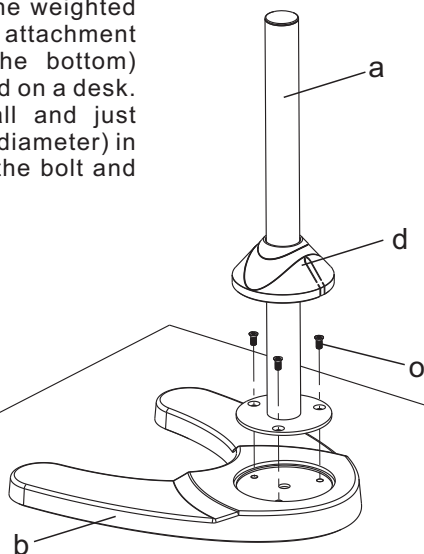
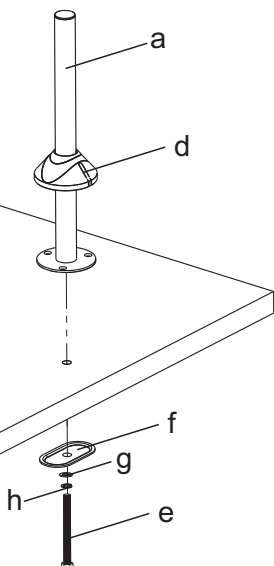
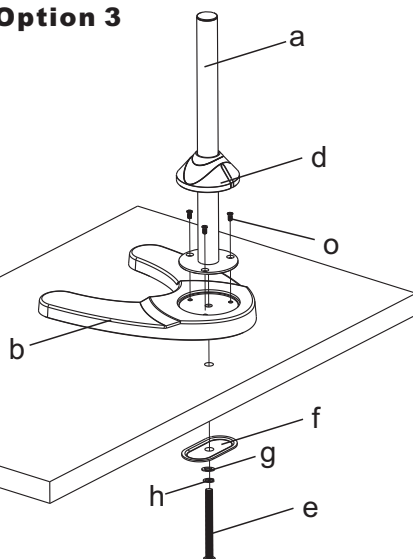
(1) Wrench-u

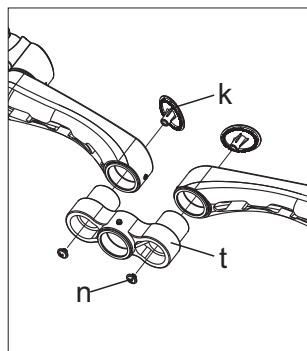
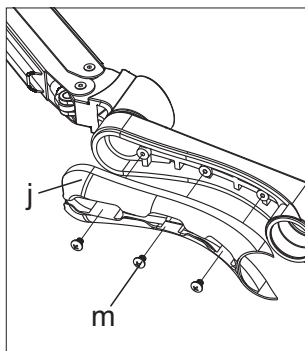
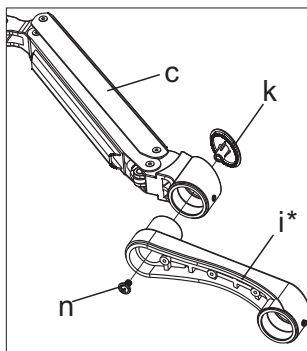


(1) Wire Clip-v

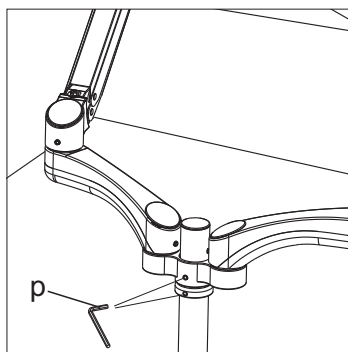
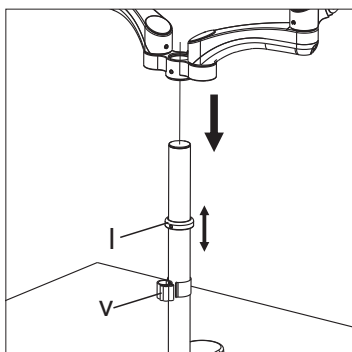
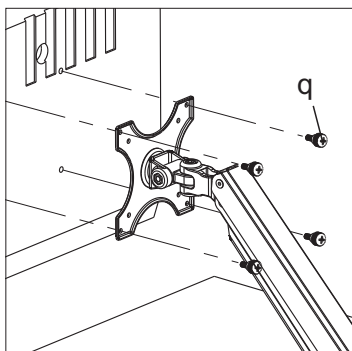
Step 1**Mounting the base according to your requirement**

The stand can be used with the weighted metal base or there is a desk attachment provided (as drawings on the bottom) allowing you to mount the stand on a desk. This is very simple to install and just requires a hole drilling (10mm diameter) in your desk and clamping with the bolt and large washer.

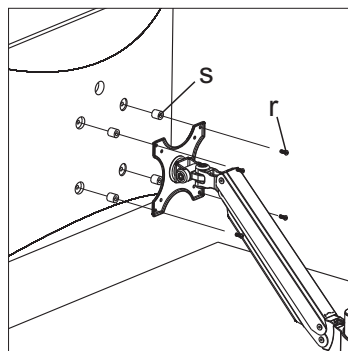
Option 1**Option 2****Option 3**

Step 2**Assemble Two Arms and Wire Cover**

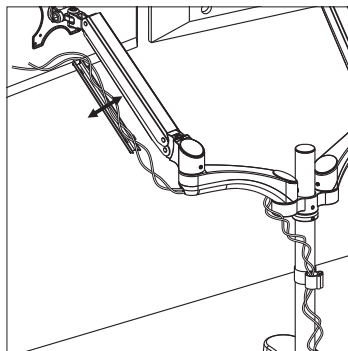
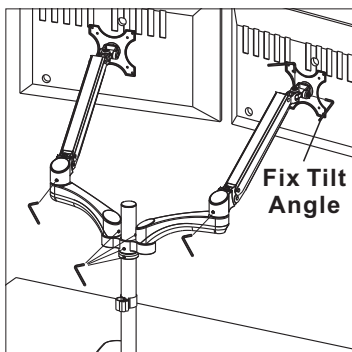
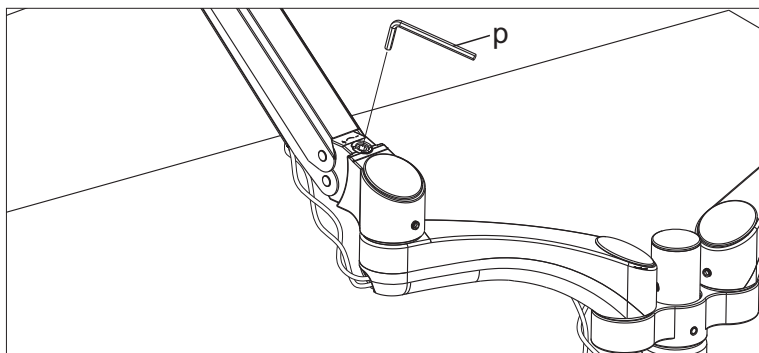
*The Add-on Arm(i) can be removed as another option if you use stand for the smaller screens on a desk that is against a wall.

Step 3**Install Arm to the Tube Support****Step 4****Mount the Monitor to VESA Plate**

For Flat Back Monitor



For Curved Back Monitor

Step 5**Make Necessary Adjustments, and Run Cables****Step 6****Adjust the Torque of Gas Spring**

Adjust the torque of gas spring according to the weight of your monitor. If your monitor can not stay in the lower position, turn the grub screw clockwise(-). If your monitor can not stay in the higher position, turn the grub screw counterclockwise(+). Keep turning until monitor position can be raised and lowered easily.

Thank you for choosing our products!